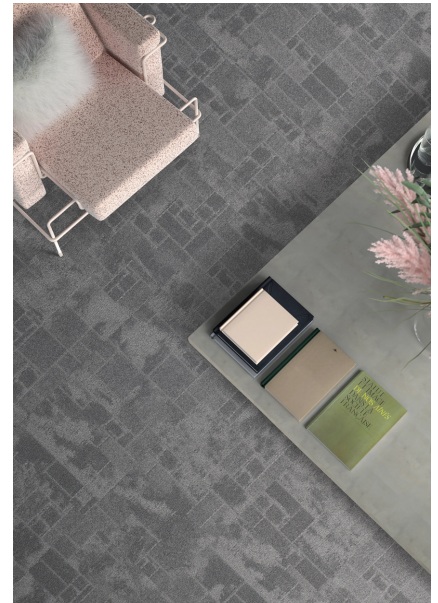
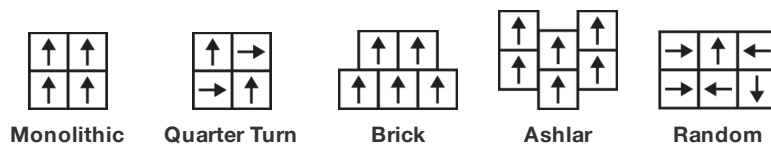


| | | |
|--------------------------|------------------------|---|
| Style Number | 5T580 | |
| Collection | Floor Architecture III | |
| Product Type | Carpet Tile | |
| Construction | Standard | Data + Performance |
| Type of Manufacture | ISO 2424 | tufted 1/10" 39.4 per 10cm |
| Aspect | ISO 2424 | Multi-Level Pattern Loop |
| Dye Method | EN 994 | 100% Solution Dyed |
| Dimensions | EN 994 | 50 cm x 50 cm 20 tiles (5 m²) per box |
| Primary Backing | ISO 2424 | Pet Non-Woven |
| Secondary Backing | ISO 2424 | Ecoworx S™ Polyolefin Plastomer |
| Pile Fibre Composition | ISO 2424 | Eco Solution Q100™ Polyamide 6 Contains 100% Recycled Content |
| Total Thickness | ISO 1765 | 6.0 mm |
| Effective Pile Thickness | ISO 1766 | 1.9 mm |
| Total Mass | ISO 8543 | 2380 g/m² |
| Nominal Total Pile Mass | ISO 2424 | 630 g/m² |
| Effective Pile Mass | ISO 8543 | 238 g/m² |
| Pile Density | ISO 8543 | 0.123 g/cm³ |



| | | |
|---------------------------------|---------------|--------------------------|
| Number of Tufts | ISO 1763 | 165,000/m² 42 per 10cm |
| Electrostatic Propensity | ISO 6356 | ≤ 2.0 kv (Stroll Test) |
| Use Classification | EN 1307 | 33 Commercial Heavy |
| Luxury Class | EN 1307 | LC1 |
| Dimensional Stability | EN 986 | ≤ 0.2% |
| Impact Sound Insulation | ISO 10140 | 26 Db |
| Sound Absorption Classification | ISO 354/11654 | 0.20 Aw Class E |
| Thermal Resistance m² K/W | ISO 8302 | 0.074 M² K/W Tog 0.74 |
| Dry Slip Resistance | ISO 13893 | Pass / No Pulled Loops |
| Colour Fastness To Light | ISO 105-B02 | >6 |
| Flammability | EN 13501-1 | Bfl-S1 (Adhered Testing) |
| Castor Chair | EN 985 | ≥2.4 Continuous USE |

Recommended Installation Method



Corporate Headquarters +1 800 257 7429 | +1 706 532 7984 | Atlanta +1 404 853 7429 | Bengaluru +91 80 6773 0202 | Beijing +86 10 6568 588 | Chicago +1 312 467 1331 | Dubai +971 4 584 6956 | Hong Kong +852 2623 0371 | Latin America (Miami) +1 305 827 5912 | London +44 207 961 4120 | Los Angeles +1 800 233 1614 | Melbourne +61 3 9939 8543 | Mexico City +55 5010 7600 | Mumbai +91 22 6284 5050 | Nantong +86 400 800 7429 | New York +1 212 953 7429 | Paris +33 (0) 1 81 22 44 39 | San Francisco +1 415 955 1920 | Santiago +562 2431 5000 x550 | São Paulo +55 11 3071 1702 | Shanghai +86 21 3338 4000 | Singapore +65 6733 1811 | Sydney +1 800 556 302

Coordinating Products

Carpet Tile: **Stone Comfortworx® Tile, Fragment Comfortworx® Tile, Formation Colours Comfortworx® Tile, Fragment Colours Comfortworx® Tile, Stone Colours Comfortworx® Tile, Formation Comfortworx® Tile, Fragment Taskworx® Tile, Stone Taskworx® Tile, Formation Colours Ecoworx S Tile, Fragment Colours Ecoworx S Tile, Formation Colours Taskworx® Tile, Fragment Colours Taskworx® Tile, Fragment Ecoworx S Tile, Formation Taskworx® Tile, Formation Ecoworx S Tile, Stone Colours Taskworx® Tile, Stone Colours Ecoworx® S Tile**

Product Transparency

Shaw Contract is dedicated to providing clients with a building chemistry that's safe and dependable. Working together, we will help you meet your goals as they pertain to material health. Ecoworx S™ products are Cradle to Cradle Certified® Silver and assessed for impacts on human health and the environment. This product can be recycled. When it's time to replace, we can collect through our re-[TURN] scheme in EMEA.

Material Health & Environmental Certifications

Certifications below apply exclusively to the carpet tile rug itself and not the LokWorx Tabs adhesive

| | |
|---|--|
| Cradle to Cradle Certified® | Silver Level (Version 3.1) |
| Environmental Product Declaration (EPD) | 3rd Party Certified in Accordance with ISO14044, ISO14025 & EN15804 |
| Embodied Carbon (Cradle to Gate) | 4.14 kg CO₂/m² |
| Life-Cycle Carbon Emissions | Carbon Neutral |
| Environmental Guarantee* | Take Back Policy Offered For All Ecoworx S™ Products |
| Country of Origin** | United Kingdom |
| BREEAM Contribution Credit | Certificate of Approval Schools/Offices/Health/Industrial Shed Retail |

WELL V2 Contribution Credit

| | |
|--|---|
| X08 Hazardous Material Reduction Part 1: Limit Hazardous Materials Optimization | C2C Silver Level (Version 3.1) |
| X10 Volatile Compound Reduction Part 1 (A): Manage Volatile Organic Compounds (VOCs) Optimization | C2C Silver Level (Version 3.1) |
| X11 Long Term Emissions Control Part 2: Flooring Optimization | M1> Emissions Class For Building Material |
| X13 Enhanced Material Precaution Part 1: Select Optimized Materials Optimization | C2C Silver Level (Version 3.1) |
| X14 Material Transparency Part 1: Promote Ingredient Disclosure Optimization | C2C Silver Level (Version 3.1) |

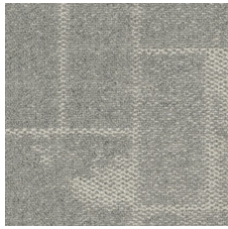
Leed v4 Contribution Credits

| | |
|--|---------------------------------------|
| MR Credit: Building Product Disclosure and Optimization Material Ingredients - Option 1: Material Ingredient Reporting | C2C Silver Level (Version 3.1) |
| MR Credit: Building Product Disclosure and Optimization Material Ingredients - Option 2: Material Ingredient Optimization | C2C Silver Level (Version 3.1) |
| EQ Credit: Low Emitting Materials Option 1: Product Category Calculations | Certified |

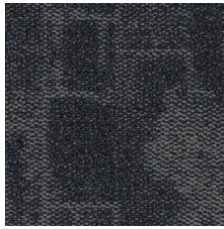
Memberships

| | |
|---------------------------------|--|
| WGBC Framework | WGBC Framework |
| UKGBC | UKGBC |
| Emirates Green Building Council | Emirates Green Building Council |
| Chemsec | Chemsec |

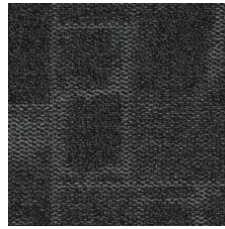
Available Colorways



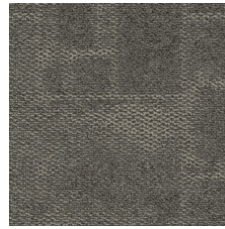
Marble 53100



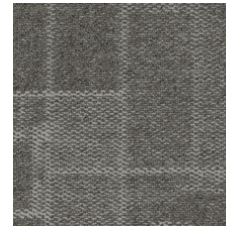
Azurite 53485



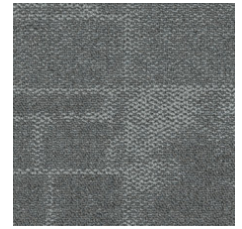
Granite 53500



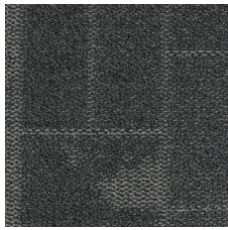
Mica 53518



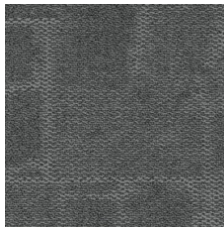
Mortar 53530



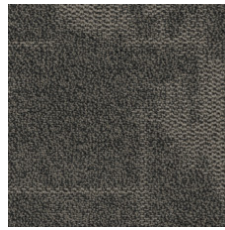
Limestone 53535



Anthracite 53555



Chromite 53580



Mix 53597

Additional Information

**Manufactured in ISO 9001 certified facility. Meets or exceeds all local and national regulations in country of manufacture.

Installation Guidelines

Maintenance Guidelines

lifetime commercial limited

Specifications are subject to nominal manufacturing variance. Material supply and/or manufacturing processes may necessitate changes without notice.

This product is an exclusive design and may not be duplicated in any manner. Use of this design in the creation of another product design is also strictly prohibited.

Visit shawcontract.com/testing for more information.



Corporate Headquarters +1 800 257 7429 | +1 706 532 7984 | **Atlanta** +1 404 853 7429 | **Bengaluru** +91 80 6773 0202 | **Beijing** +86 10 6568 588 | **Chicago** +1 312 467 1331 | **Dubai** +971 4 584 6956 | **Hong Kong** +852 2623 0371 | **Latin America (Miami)** +1 305 827 5912 | **London** +44 207 961 4120 | **Los Angeles** +1 800 233 1614 | **Melbourne** +61 3 9939 8543 | **Mexico City** +55 5010 7600 | **Mumbai** +91 22 6284 5050 | **Nantong** +86 400 800 7429 | **New York** +1 212 953 7429 | **Paris** +33 (0) 1 81 22 44 39 | **San Francisco** +1 415 955 1920 | **Santiago** +562 2431 5000 x 550 | **São Paulo** +55 11 3071 1702 | **Shanghai** +86 21 3338 4000 | **Singapore** +65 6733 1811 | **Sydney** +1 800 556 302

© 2024 Shaw Industries Group, Inc., a Berkshire Hathaway Company
May 20, 2024

3 of 3